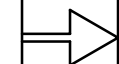
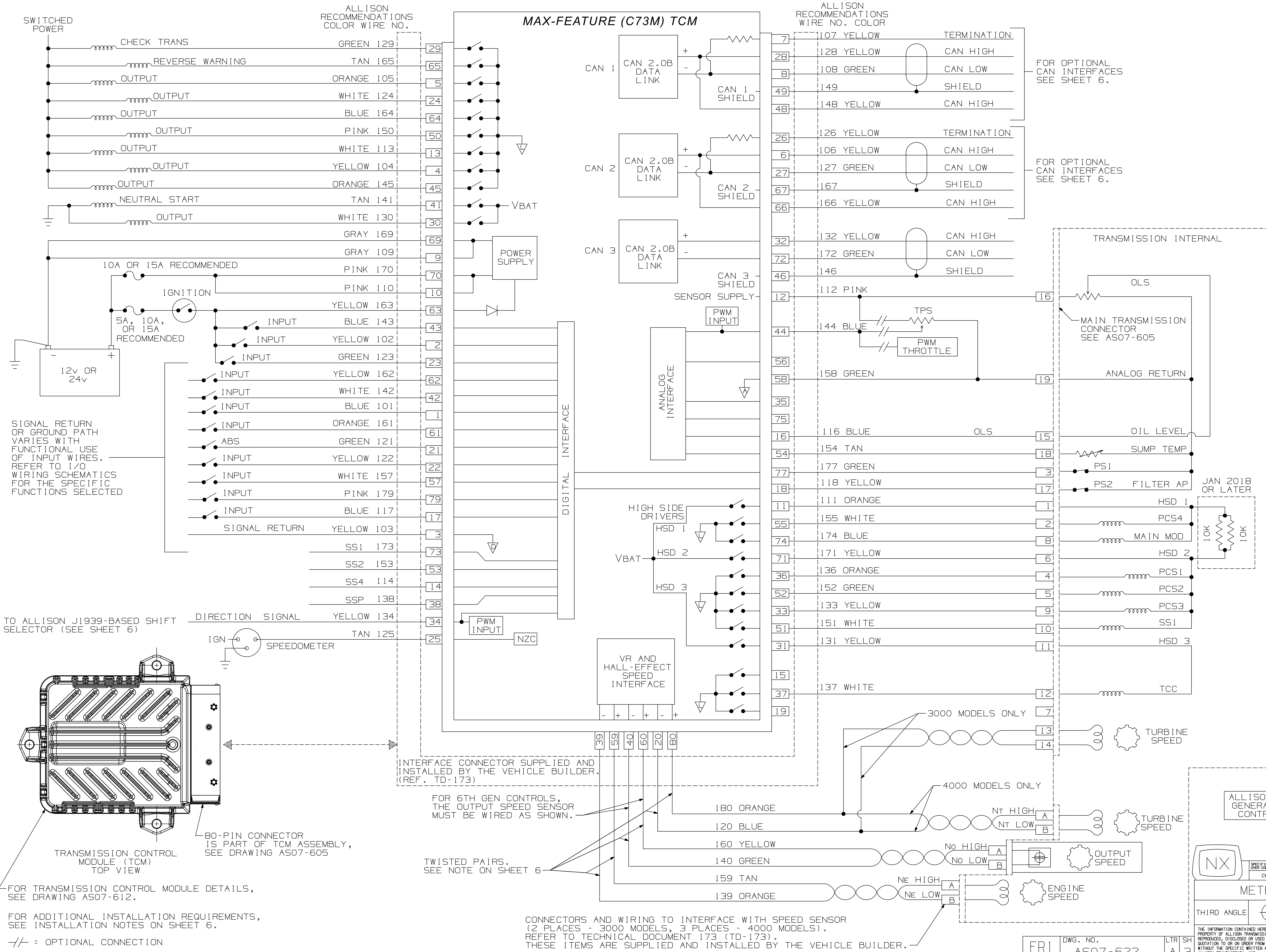


UN
DWC

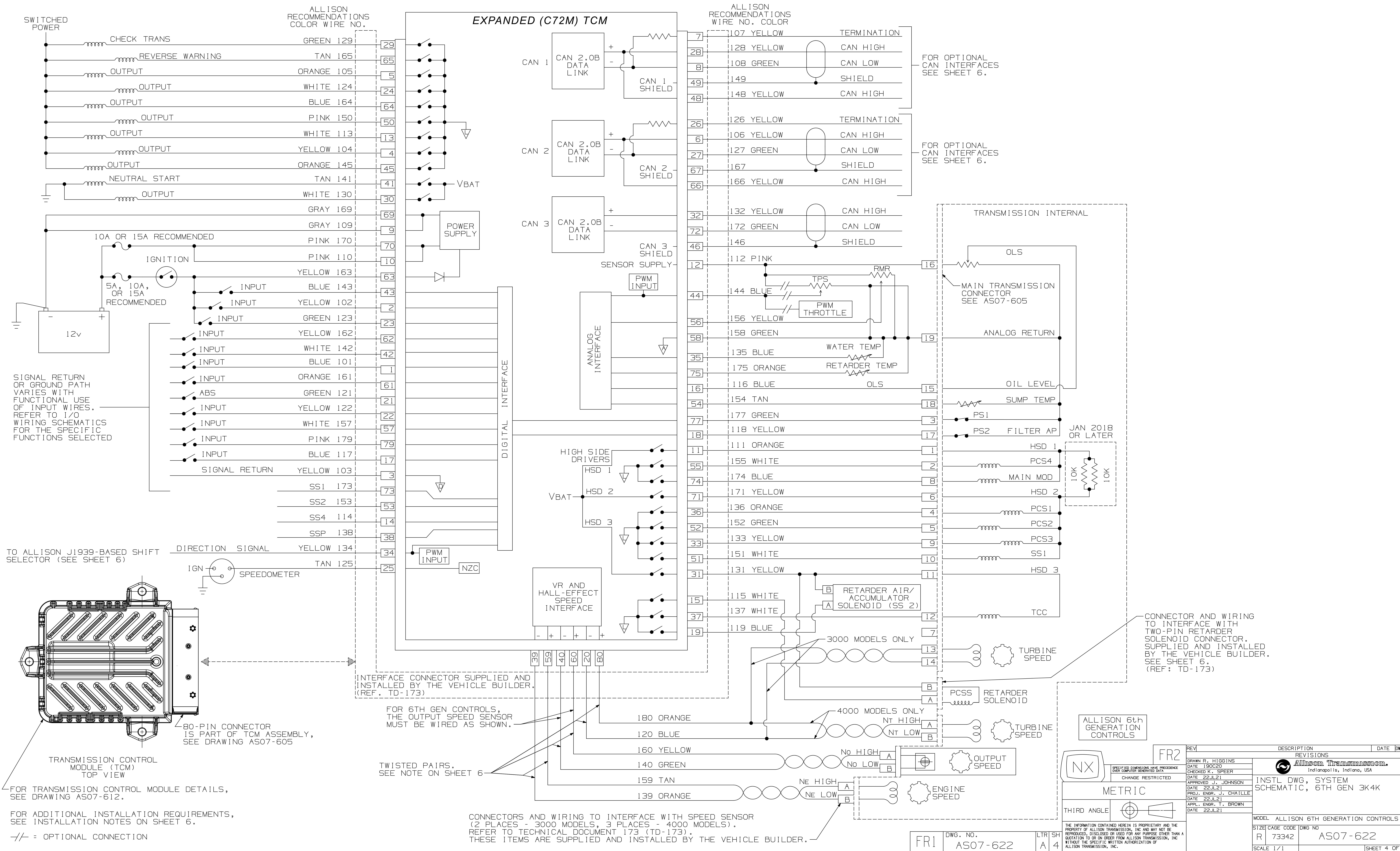
CURRENT STATUS:
RX-Released - EXP

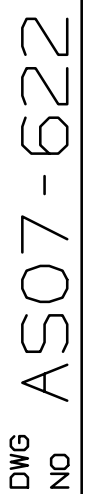


FOR 3000/4000 NON-RETARDER MODELS EXCEPT 7 SPEED MODELS



FOR 3000/4000 RETARDER MODELS EXCEPT 7 SPEED MODELS





INSTALLATION NOTES

TCM MUST RECEIVE IGNITION POWER WHEN ENGINE CONTROL MODULE RECEIVES POWER IF SENSORS ARE SHARED BETWEEN THE TWO MODULES OR IF COMMUNICATION BETWEEN THE TWO MODULES IS NECESSARY.

MATING CONNECTORS ARE SUPPLIED AND INSTALLED BY THE VEHICLE BUILDER.

WIRE SIZE 0.75 mm² (18 AWG) EXCEPT WHERE NOTED.

WHERE TWISTED PAIRS OF WIRES ARE ILLUSTRATED, REQUIRED TWIST RATE IS 16 ± 4 TWISTS PER 300 mm.

ALL LIGHTS, SWITCHES, ALARM INDICATORS, ELECTRONIC SPEEDOMETER, ELECTRONIC ENGINE CONTROLS, AND ILLUMINATION CONTROL ARE SUPPLIED AND INSTALLED BY THE VEHICLE BUILDER.

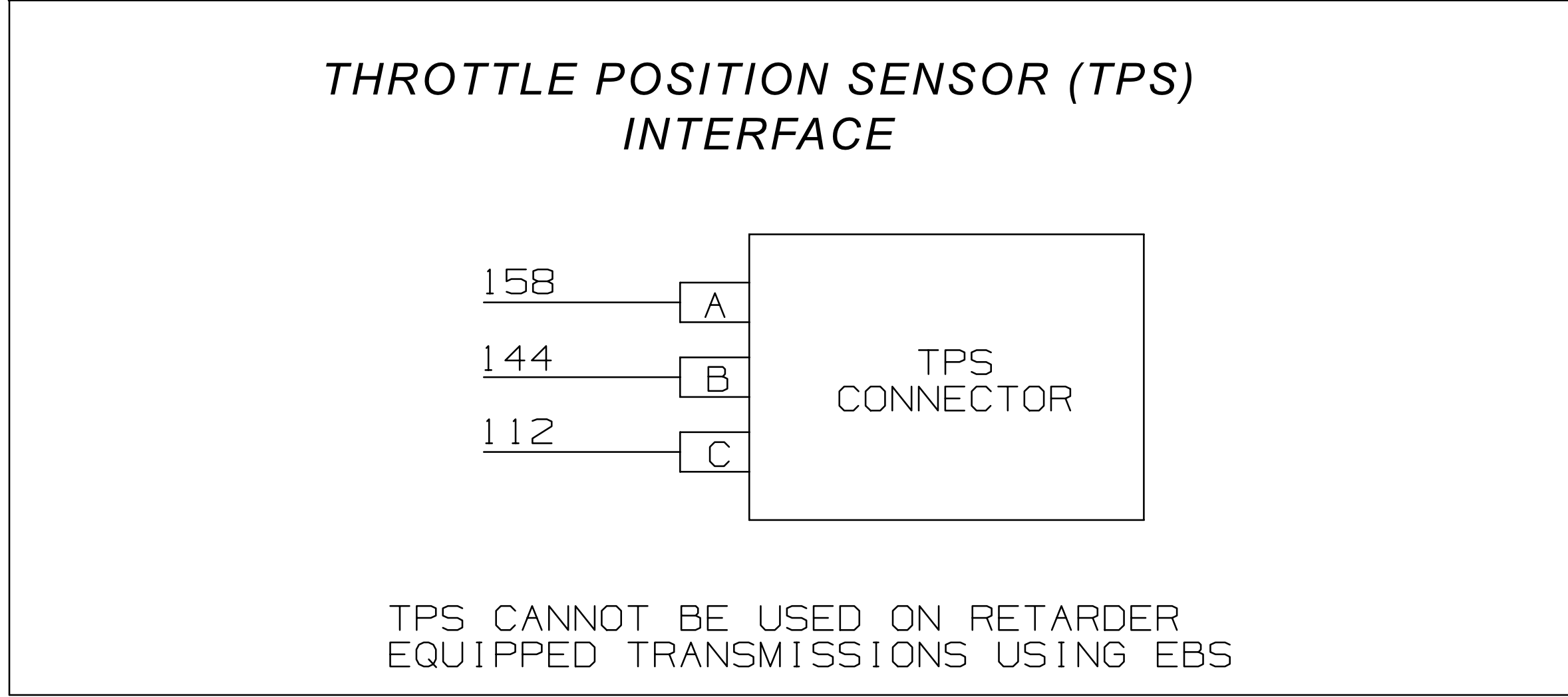
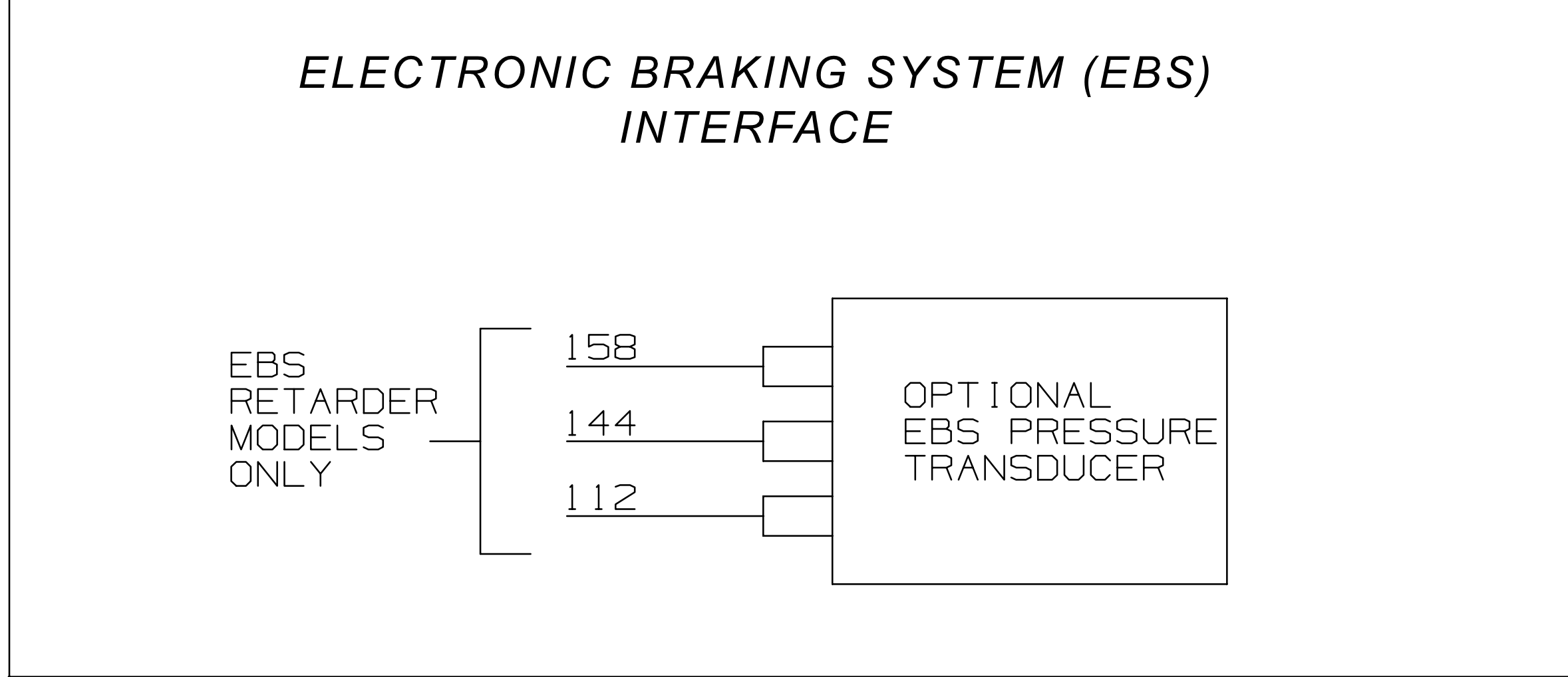
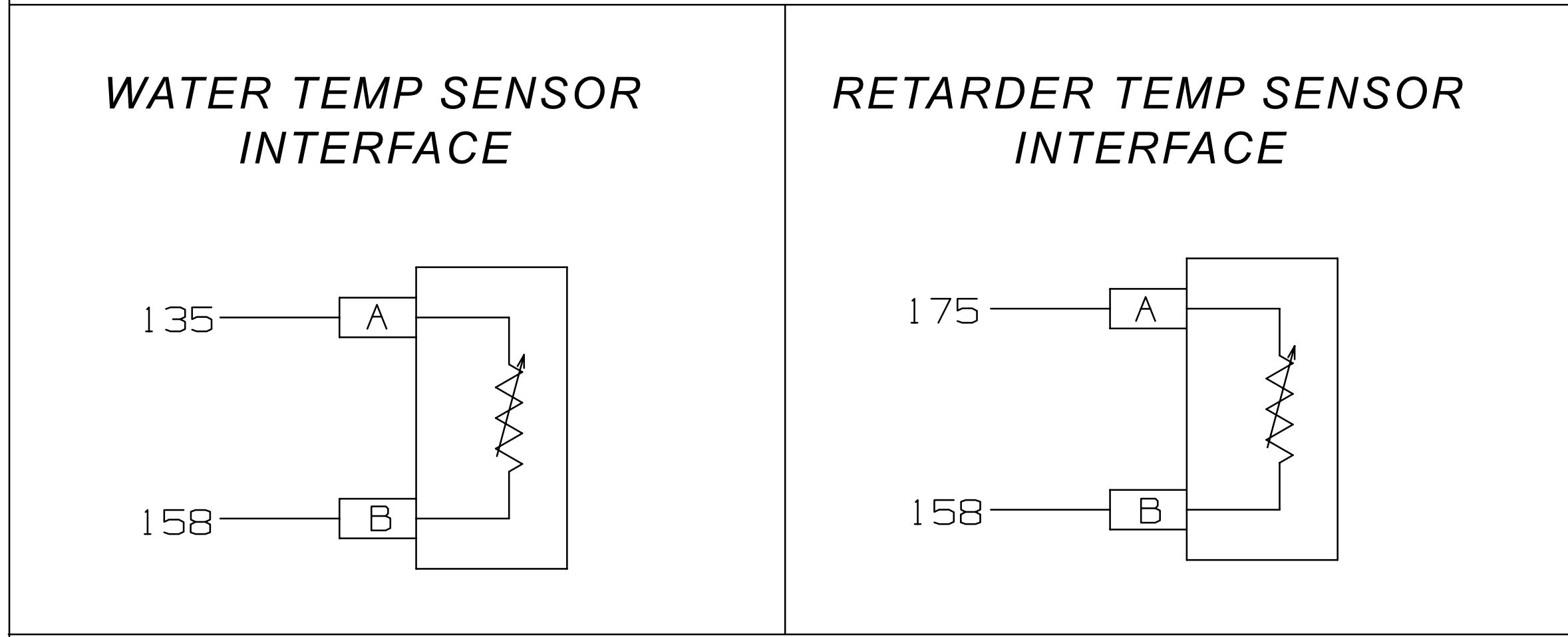
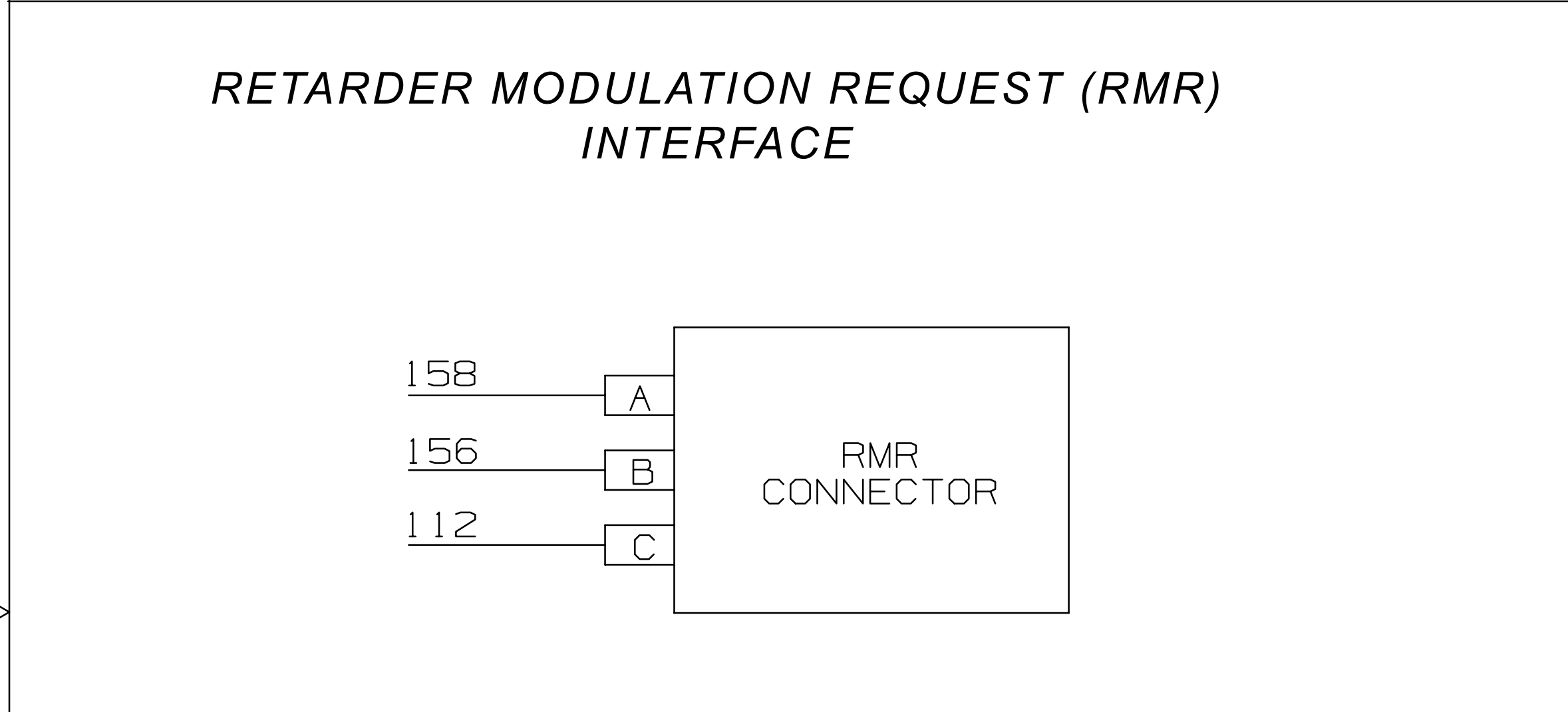
FOR J1939 INTERFACE CONSIDERATIONS REFER TO DATALINK COMMUNICATION TECH DATA.

FOR OPERATING DATA, SEE CONTROL SYSTEM DATA.

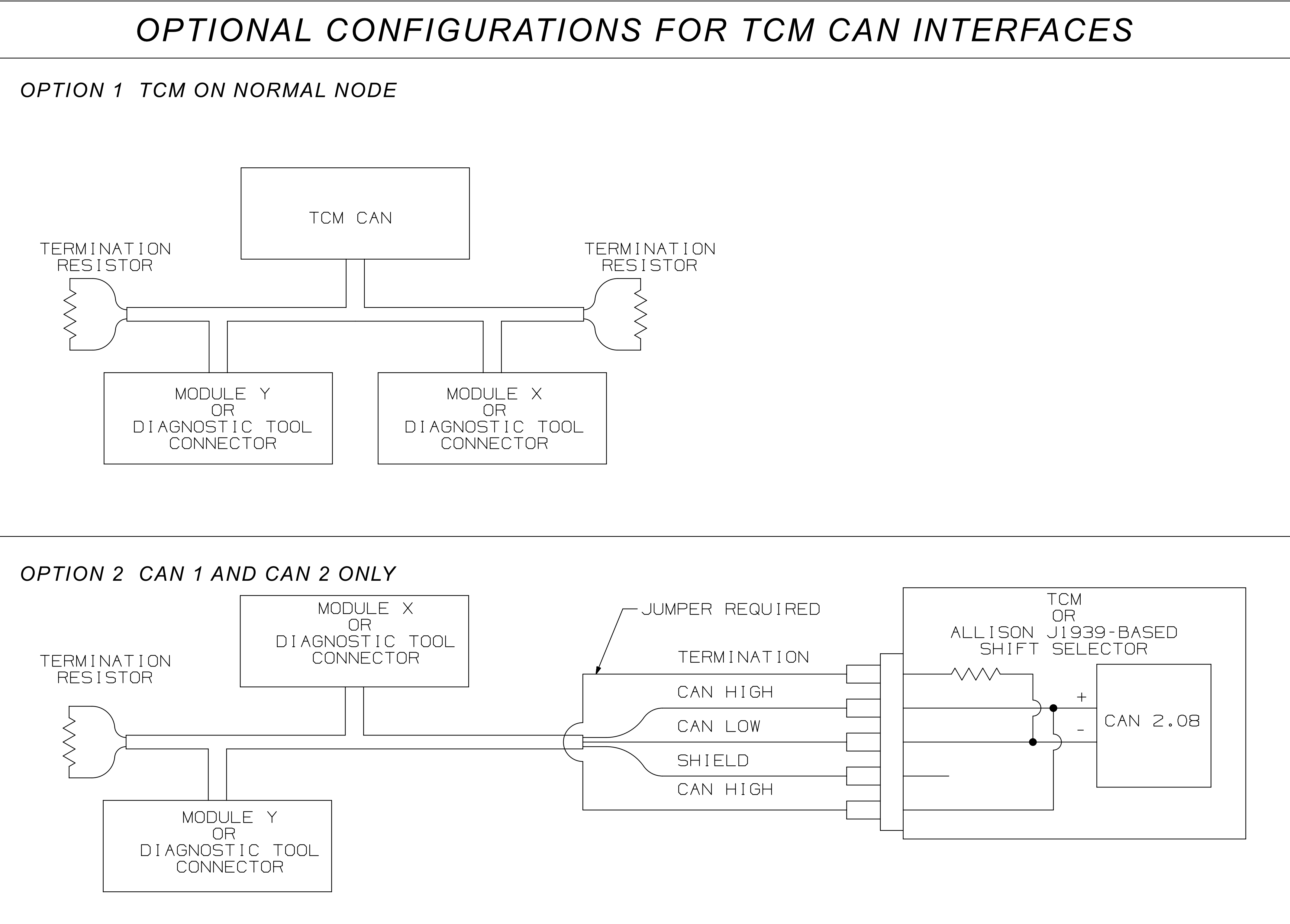
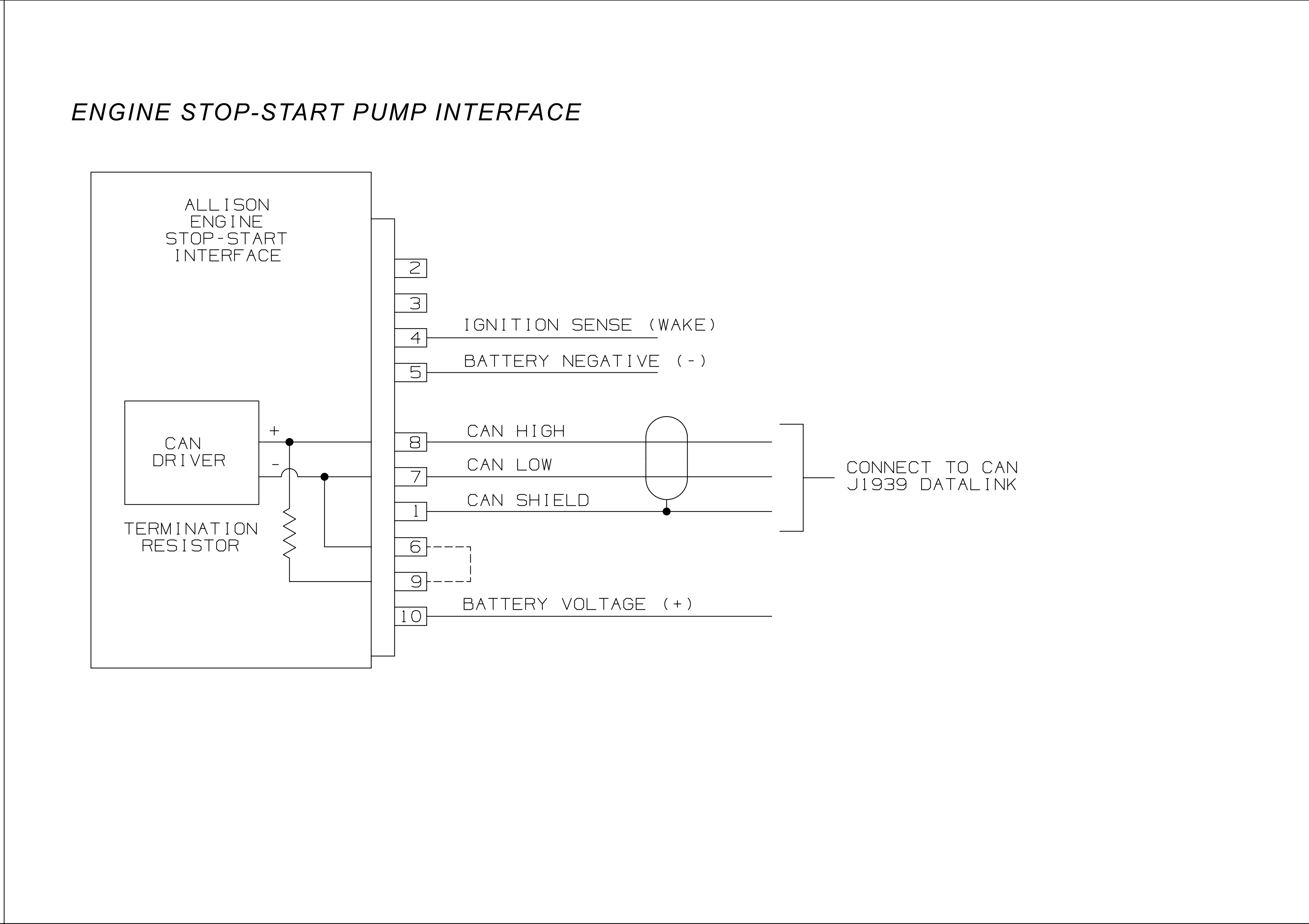
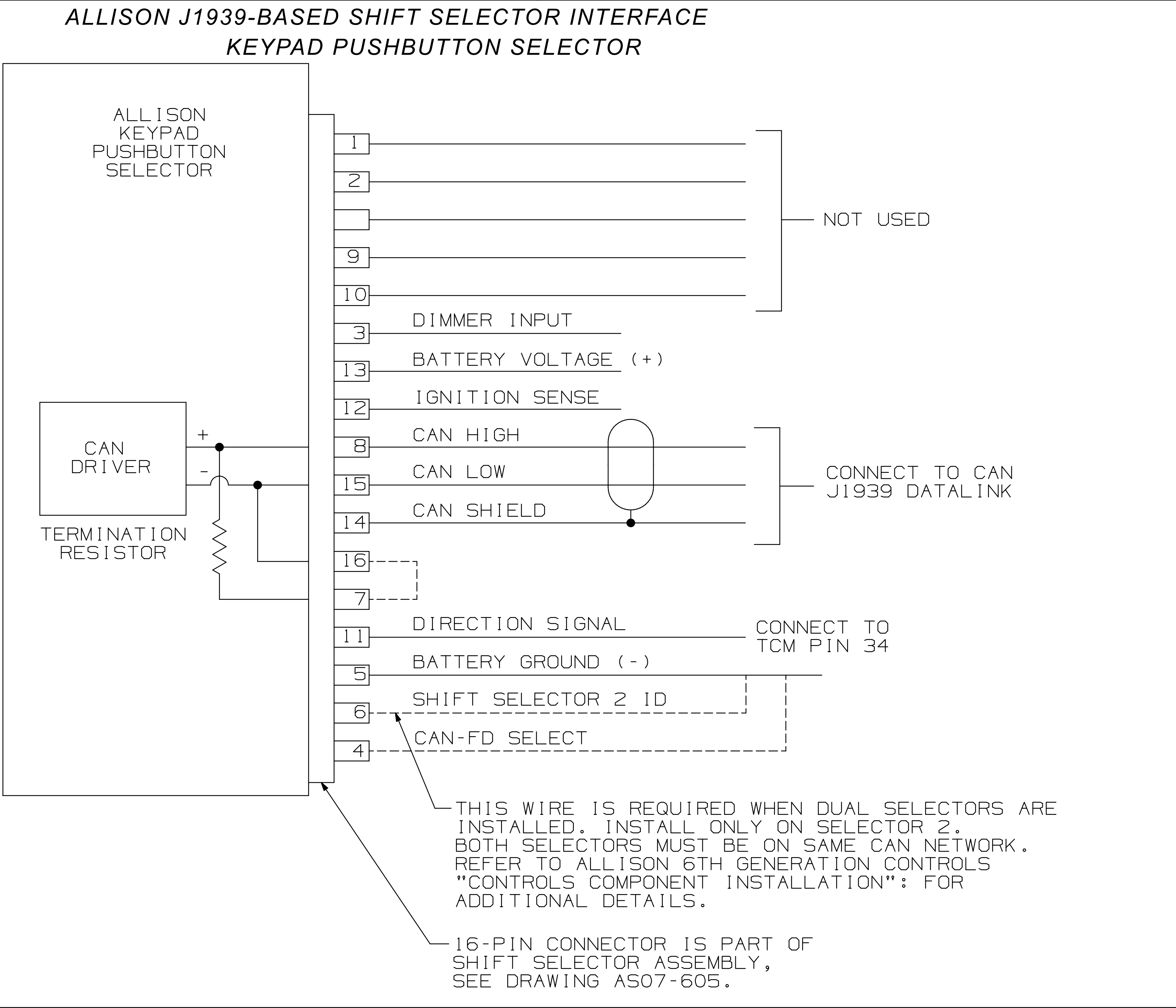
REFER TO TECHNICAL DOCUMENT 173 (TD173) FOR INFORMATION ON WIRING HARNESSES.

INSERT CAVITY PLUGS IN ALL OPEN CAVITIES OF SPECIFIED CONNECTORS. QUANTITY WILL VARY ACCORDING TO INSTALLATION INTERFACE REQUIREMENTS. THE PLUG IS TO BE INSERTED UNTIL THE LARGER DIAMETER IS FLUSH WITH THE CONNECTOR GROMMET.

WHEN FEATURES ARE NOT USED, ALL LEAD WIRES TO THOSE FEATURES ARE TO BE OMITTED.



TPS CANNOT BE USED ON RETARDER EQUIPPED TRANSMISSIONS USING EBS



FR1

DWG. NO. AS07-622

LTR

SH

A

6

ALLISON 6th GENERATION CONTROLS

NX

FR2

METRIC

THIRD ANGLE

A (2) ADDED "ENGINE STOP-START PUMP INTERFACE" SCHEMATIC		15AU23 RHJC
REV	DESCRIPTION	DATE
REVISIONS		
DATE	190C20	
CHECKED	K. SPEER	
DATE	22JUL21	
APPROVED	J. JOHNSON	
DATE	22JUL21	
PROJ. ENGR.	J. CHATLLE	
DATE	22JUL21	
APPL. ENGR.	T. BROWN	
DATE	22JUL21	
MODEL ALLISON 6TH GENERATION CONTROLS		
SIZE	CAGE CODE	DWG NO
R	73342	AS07-622
SCALE 1/1		
SHEET 6 OF 6		

THE INFORMATION CONTAINED HEREIN IS PROPRIETARY AND THE PROPERTY OF ALLISON TRANSMISSION, INC. AND MAY NOT BE REPRODUCED, DISCLOSED OR USED FOR ANY PURPOSE OTHER THAN A QUOTATION TO OR ON ORDER FROM ALLISON TRANSMISSION, INC. WITHOUT THE SPECIFIC WRITTEN AUTHORIZATION OF ALLISON TRANSMISSION, INC.

CURRENT STATUS: RX-Released - EXP